

Woodson Wave Report (est.1997)
August 20, 2019
woodsonwave.com



Let the decline resume!
Fibonacci Options Day Trader

[Follow WWR on Twitter](#)

2018 Performance Report

Account #1 + 29.59%

Account #2 + 69.04%

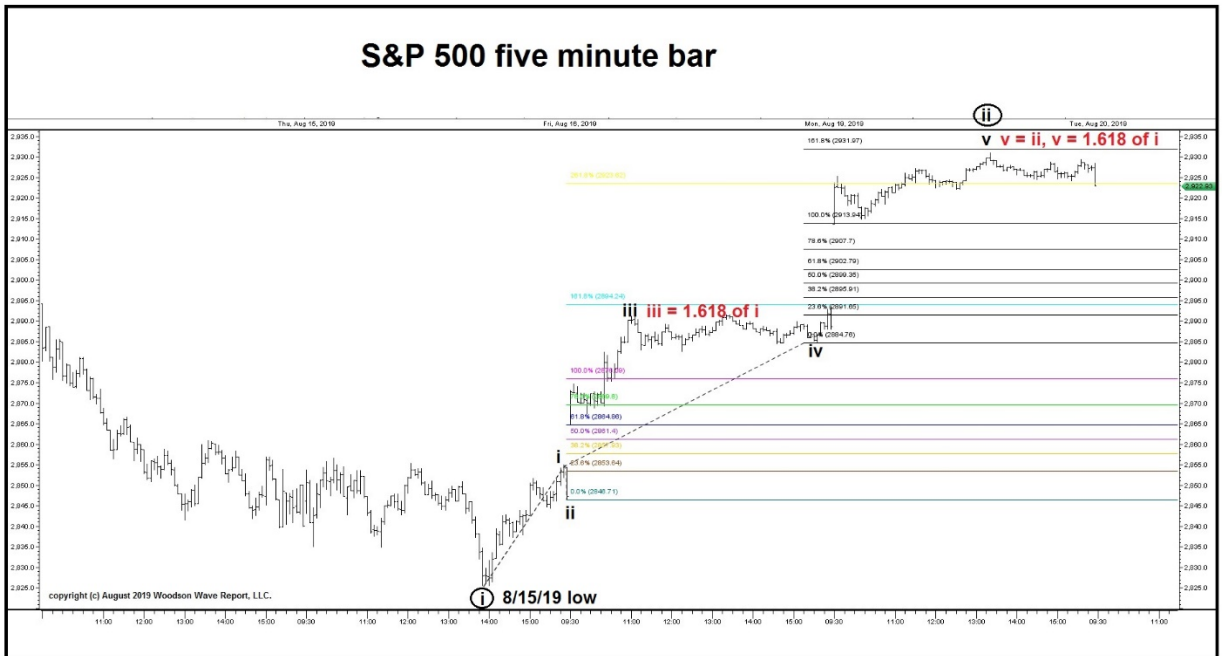
Account #3 + 133.47%

S&P 500 – 6.24%

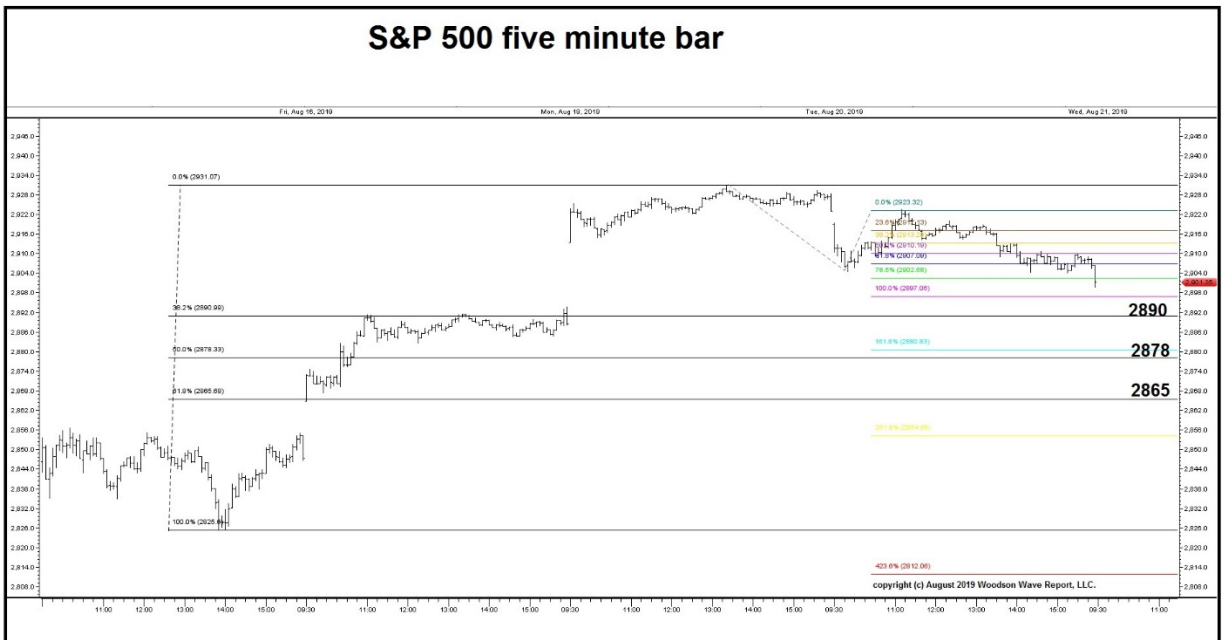
Let the decline resume!

Woodson Wave Report is still Timer Digest's #1 ranked market timing service **now for the 3 month period ending 080219.**

Timer Digest (P.O. BOX 1688, Greenwich, CT. 06836/ 203-629-3503)



Yesterday's (advance) chart above, today's (decline) chart below



2896 = (iii) = (i).

2880 = (iii = 1.618 of (i).

2822 = move below this wave 1 low eliminated move > 2950.

2814 = third wave = first wave from 0813 high

2744 = open gap from June 3, 2019.

2742 = third wave = 1.618 of first wave from 0813 high

2733 = wave 3 = wave 1 from 0716 high

2713 = third wave equals 1.618 of first wave from 0813.

2605 = wave 3 = 1.618 of wave 1 and a Fibonacci .618 retracement of rise from Dec. low. A nice temporary stopping point for the end of a wave down but not the end of the entire wave E decline.

Upside resistance:

2900 = .382 retracement. **Achieved.**

2925 = .500 retracement. **Achieved.**

2938 = Wave 2 high. **Achieved 0813.**

2950 = Fibonacci retracement of decline and multiple of rise.

3027 = All-time high.

Fibonacci Options Day Trader Report:

We started the day with a **net realized loss of \$12,448** from the puts that expired worthless **yesterday** as they settled to our account today. We **day traded today for a gain of \$7,173** to offset those losses to bring our total net realized loss from \$12,448 down to \$5,275 for the day.

We began the day with 11 puts that expire Friday. We sold some for a profit throughout the day and traded in and out (10 times total) of the Aug 23rd 2925 puts all day. We still own six August 23rd 2875 puts.

REALIZED G&L SUMMARY

Total Gain Realized
 \$ (2,799.83) Total Commissions & Fees
 \$ 89.83

REALIZED G&L DETAILS Symbol	Q	Opening Date	Opening Price	Opening Net Amount \$	Closing Date	Closing Price	Closing Net Amount \$	Realized Gain \$	Pct. Gain
SPXW Aug 19 '19 \$2825 Put	2	8/15/2019	19	3,807.00	8/20/2019	0	\$ -	\$ (3,807.00)	-100.00%
SPXW Aug 19 '19 \$2875 Put	2	8/16/2019	9.9	1,987.00	8/20/2019	0	\$ -	\$ (1,987.00)	-100.00%
SPXW Aug 19 '19 \$2875 Put	2	8/16/2019	8.7	1,747.00	8/20/2019	0	\$ -	\$ (1,747.00)	-100.00%
SPXW Aug 23 '19 \$2925 Put	1	8/20/2019	23.7	2,373.50	8/20/2019	33.8	\$ 3,374.02	\$ 1,000.52	42.15%
SPXW Aug 23 '19 \$2925 Put	1	8/19/2019	20.3	2,033.50	8/20/2019	28.4	\$ 2,834.02	\$ 800.52	39.37%
SPXW Aug 23 '19 \$2925 Put	1	8/20/2019	22.1	2,215.98	8/20/2019	29.2	\$ 2,914.02	\$ 698.05	31.50%
SPXW Aug 23 '19 \$2925 Put	1	8/19/2019	20.3	2,033.50	8/20/2019	30.4	\$ 3,034.02	\$ 1,000.52	49.20%
SPXW Aug 23 '19 \$2925 Put	1	8/19/2019	23.1	2,313.50	8/20/2019	28.2	\$ 2,814.02	\$ 500.52	21.63%
SPXW Aug 23 '19 \$2925 Put	1	8/20/2019	23.7	2,373.50	8/20/2019	30.2	\$ 3,014.02	\$ 640.52	26.99%
SPXW Aug 23 '19 \$2925 Put	1	8/19/2019	23.1	2,313.50	8/20/2019	24.2	\$ 2,414.02	\$ 100.52	4.34%
Total				23,197.99			\$ 20,398.17	\$ (2,799.83)	-12.07%

REALIZED G&L SUMMARY

Total Gain Realized
 \$ (2,475.44) Total Commissions & Fees
 \$ 35.44

REALIZED G&L DETAILS Symbol	Q	Opening Date	Opening Price	Opening Net Amount \$	Closing Date	Closing Price	Closing Net Amount \$	Realized Gain \$	Pct. Gain
SPXW Aug 19 '19 \$2825 Put	2	8/15/2019	24.5	4,907.00	8/20/2019	0	\$ -	\$ (4,907.00)	-100.00%
SPXW Aug 23 '19 \$2925 Put	1	8/20/2019	27	2,703.50	8/20/2019	35.1	\$ 3,504.02	\$ 800.52	29.61%
SPXW Aug 23 '19 \$2925 Put	1	8/20/2019	27	2,703.50	8/20/2019	34.4	\$ 3,434.02	\$ 730.52	27.02%
SPXW Aug 23 '19 \$2925 Put	1	8/19/2019	21.7	2,173.50	8/20/2019	30.8	\$ 3,074.02	\$ 900.52	41.43%
Total				12,487.51			\$ 10,012.07	\$ (2,475.44)	-19.82%
Total both accounts				35,685.50			\$ 30,410.24	\$ (5,275.27)	-31.89%

Today's Trades

[Follow WWR on Twitter](#)

Dale tweets his trades in real time.

We started the day with 11 puts. We bought (3 times) and sold (13 times) in and out of the August 23rd 2925 puts for a net realized profit trading today of \$7,173,

Account # 1

Date	Order	Type	Order type	Quantity	Symbol	Price type	Term	Price	Price executed	Status
08/20/19	3301	Option	Sell Close	1	SPXW Aug 23 '19 \$2925 Put	Limit	Day	33.80	33.80	Executed
08/20/19	3300	Option	Sell Close	1	SPXW Aug 23 '19 \$2925 Put	Limit	Day	30.20	30.20	Executed
08/20/19	3299	Option	Sell Close	1	SPXW Aug 23 '19 \$2925 Put	Limit	Day	28.20	28.20	Executed
08/20/19	3295	Option	Sell Close	1	SPXW Aug 23 '19 \$2925 Put	Limit	Day	29.20	29.20	Executed
08/20/19	3289	Option	Buy Open	1	SPXW Aug 23 '19 \$2925 Put	Limit	Day	22.10	22.10	Executed
08/20/19	3286	Option	Sell Close	1	SPXW Aug 23 '19 \$2925 Put	Limit	Day	24.20	24.20	Executed
08/20/19	3285	Option	Buy Open	2	SPXW Aug 23 '19 \$2925 Put	Limit	Day	23.70	23.70	Executed
08/20/19	3284	Option	Sell Close	1	SPXW Aug 23 '19 \$2925 Put	Limit	Day	30.40	30.40	Executed
08/20/19	3282	Option	Sell Close	1	SPXW Aug 23 '19 \$2925 Put	Limit	Day	28.40	28.40	Executed

08/20/19	3279	Option Expired	Sell Close	2	SPXW Aug 19 '19 \$2825 Put	—	—	—	—	Expired
08/20/19	3278	Option Expired	Sell Close	4	SPXW Aug 19 '19 \$2875 Put	—	—	—	—	Expired

Account # 2

Date	Order	Type	Order type	Quantity	Symbol	Price type	Term	Price	Price executed	Status
08/20/19	1661	Option	Sell Close	1	SPXW Aug 23 '19 \$2925 Put	Limit	Day	34.40	34.40	Executed
08/20/19	1660	Option	Sell Close	1	SPXW Aug 23 '19 \$2925 Put	Limit	Day	35.10	35.10	Executed
08/20/19	1659	Option	Buy Open	2	SPXW Aug 23 '19 \$2925 Put	Limit	Day	27.00	27.00	Executed
08/20/19	1657	Option	Sell Close	1	SPXW Aug 23 '19 \$2925 Put	Limit	Day	30.80	30.80	Executed
08/20/19	1655	Option Expired	Sell Close	2	SPXW Aug 19 '19 \$2825 Put	—	—	—	—	Expired

Positions for rating services:

Long-term counts are found on weekly and/or monthly charts and generally cover a time period of years to decades.

Intermediate-term counts are found on daily and/or weekly charts and generally cover a time period of weeks to years.

Short-term counts are found on daily and/or hourly charts and generally cover a time period of days to hours.

Dow:

Long term: Moved to a short position after the close on 0717/19.

Intermediate term: Moved to a short position after the close on 0717/19.

Short Term: Moved to a short position after the close on 0717/19.

NASDAQ:

Long term: Moved to a short position after the close on 0717/19.

Intermediate term: Moved to a short position after the close on 0717/19.

Short Term: Moved to a short position after the close on 0717/19.

S&P 500:

Long term: Moved to a short position after the close on 0717/19.

Intermediate term: Moved to a short position after the close on 0717/19.

Short Term: Moved to a short position after the close on 0717/19.

Gold: Remain short in anticipation of wave 5 down to 1000.

Bonds: Moved to a short position after the close on 6/7/19.

Subscription to Woodson Wave Report: \$233 Annual subscription includes: one newsletter per month plus all special interim reports issued between monthly newsletters as market conditions warrant.